

Finish the Fight Eradicate Scrapie

Sheep Identification Requirements

STEP 1



Determine which sheep need official ear tags or IDs to move between different states (interstate) or within the same state (intrastate).

STEP 2



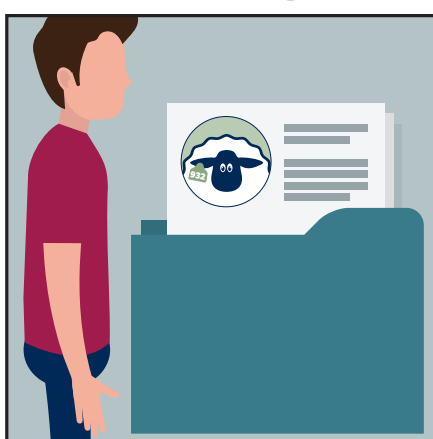
Request a flock ID from your local APHIS Veterinarian or State Veterinary office.

STEP 3



Determine which approved ear tags or ID systems work best for your operation and apply official IDs to your animals before they leave your farm.

STEP 4



Create a method to record your flock's ear tags or official IDs.

STEP 5



Get a health certificate from an accredited veterinarian before interstate shipment for breeding, exhibitions, or sale.

STEP 6



Retain records for 5 years after the animals are transported or sold.

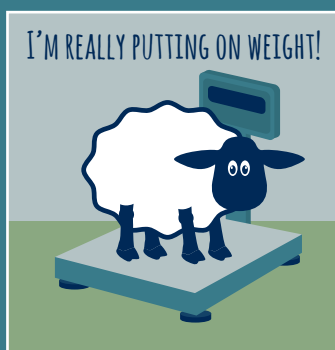
For more information on tags, call **1-866-USDA-TAG (873-2824)**

Baa, where do I fit?



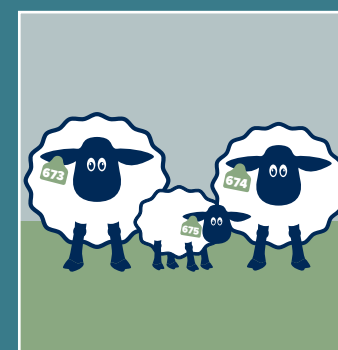
CULLED SHEEP

Culled ewes or rams must be officially tagged/identified. Cull sheep are defined as animals more than 18 months of age.



MARKET LAMBS

Lambs under 18 months of age going to slaughter DO NOT need official identification.



BREEDING STOCK

Breeding ewes or rams DO NOT need an official ID if they stay on the farm or ranch. Official IDs are REQUIRED for any breeding stock going to a show or sale. *Note: Local shows are considered interstate movements if any out-of-state animals attend.*