

Lamb Market Rollercoaster

ASI

Fort Worth, TX

January 20, 2023

David P. Anderson

Professor and Extension Economist



Overview

- Usual Suspects
- Demand
- Supplies



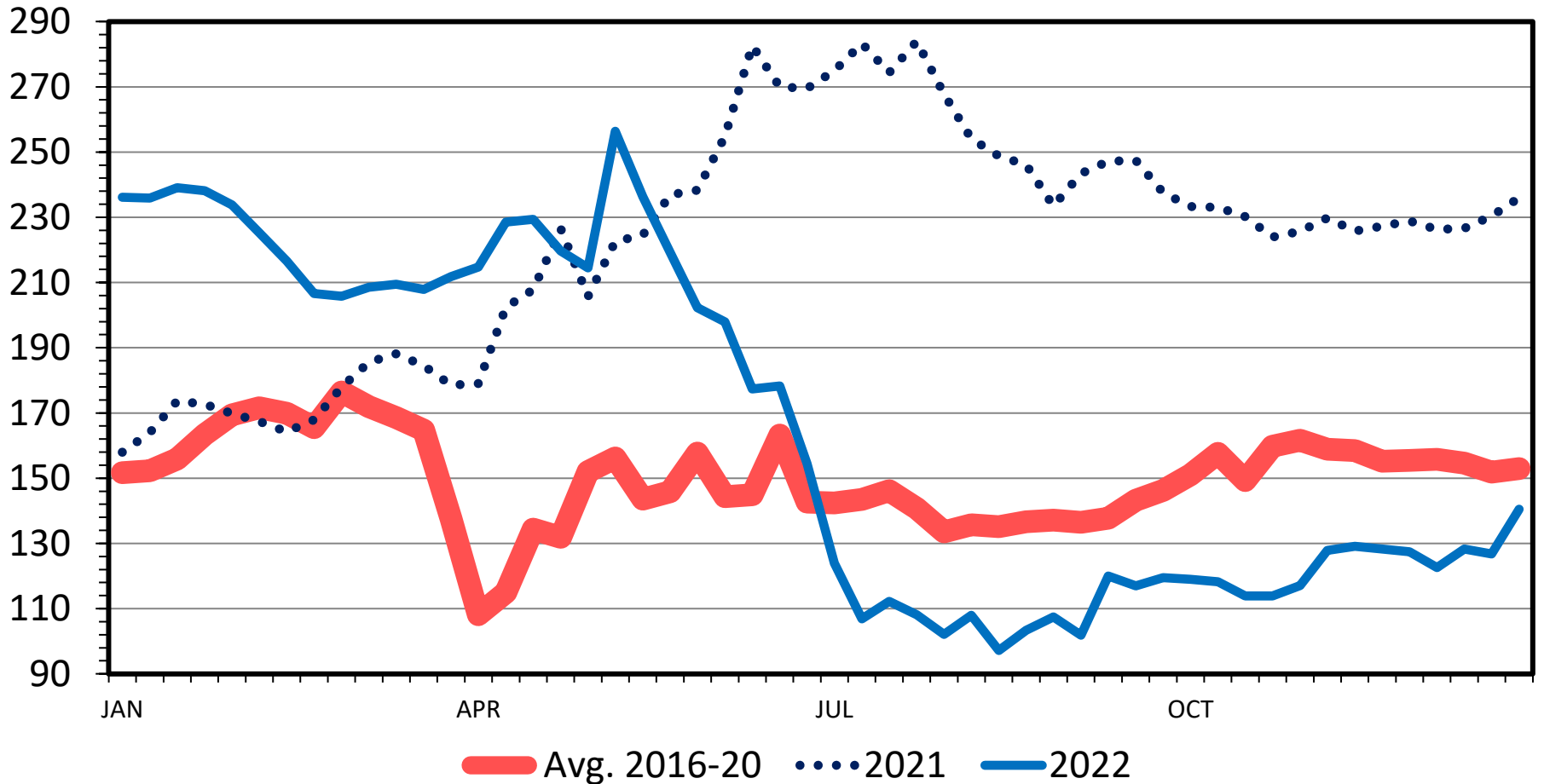
We've Been Here Before

- Collapsing Prices
- Variety of Past Reasons
 - Backed up supplies
 - Over finished, heavy weights, older
 - Imports
 - Cold storage stocks
- A Bit Different This Time

SLAUGHTER LAMB PRICES

Wooled, 110-130 lbs, Sioux Falls, Weekly

\$ Per Cwt.



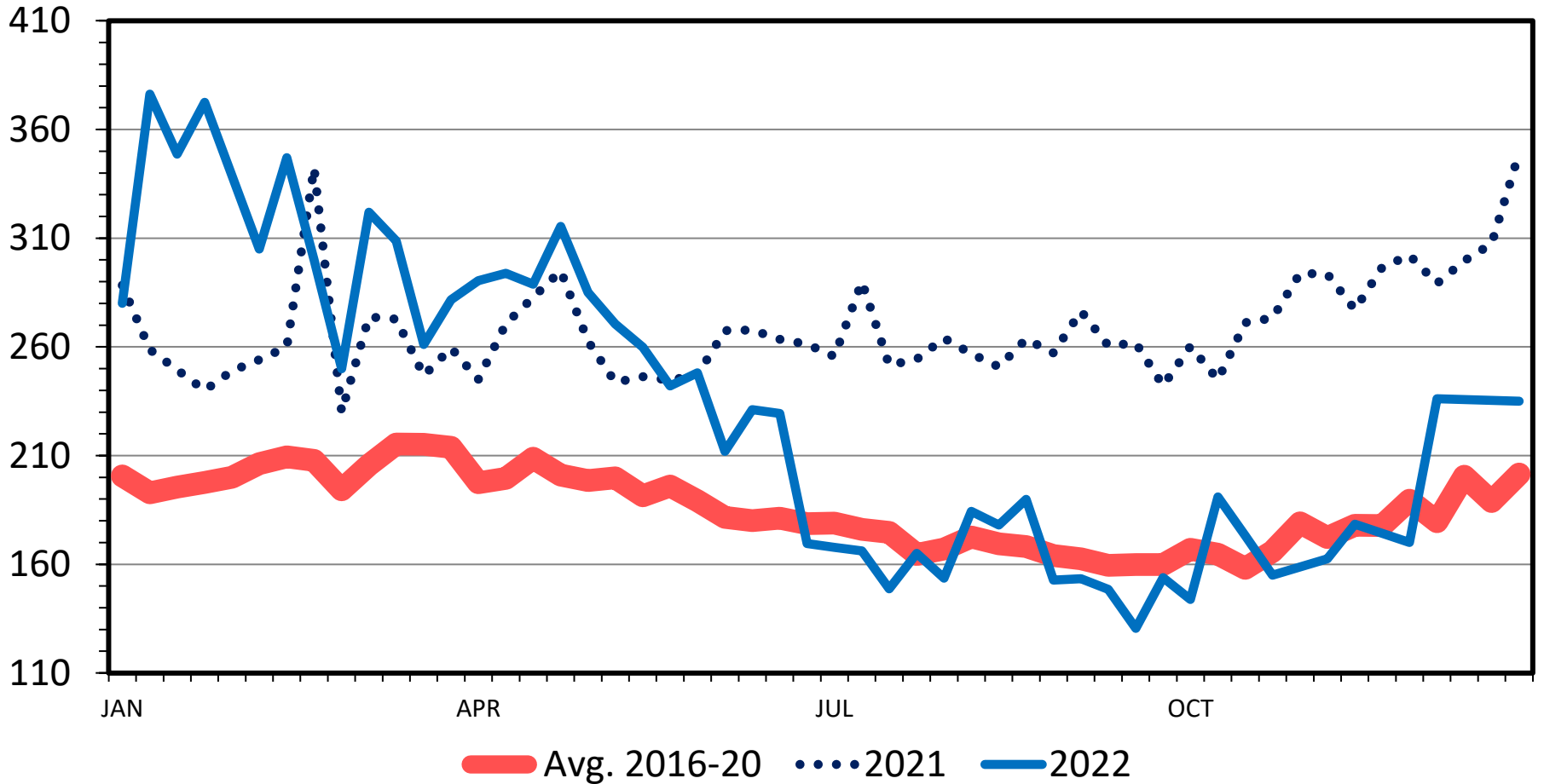
Data Source: USDA-AMS

Livestock Marketing Information Center

FEEDER LAMB PRICES

3-Market Average; CO, TX & SD; Weekly

\$ Per Cwt.



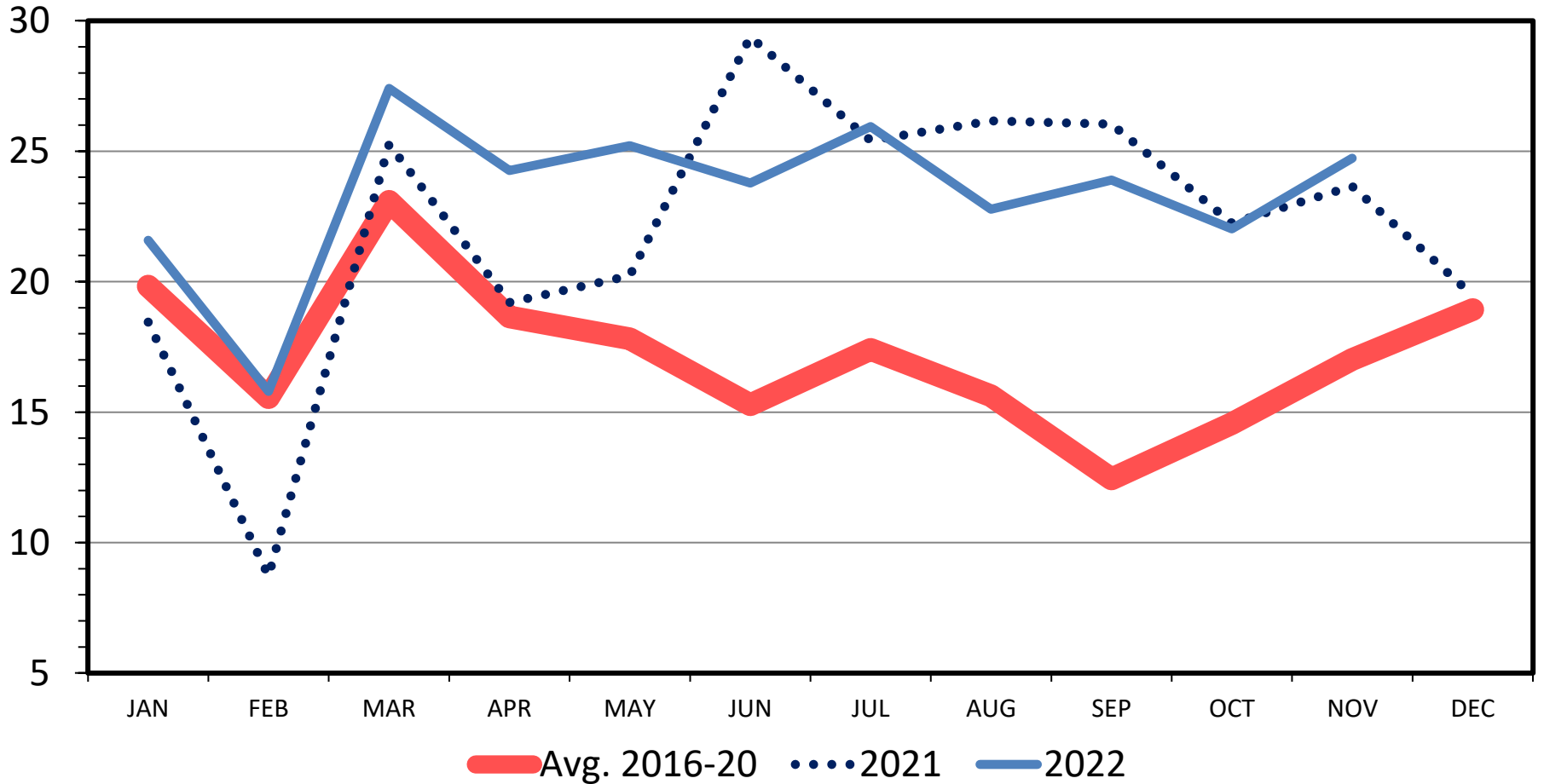
Data Source: USDA-AMS, Compiled by LMIC

Livestock Marketing Information Center

US LAMB IMPORTS

Carcass Weight, Monthly

Mil. Pounds

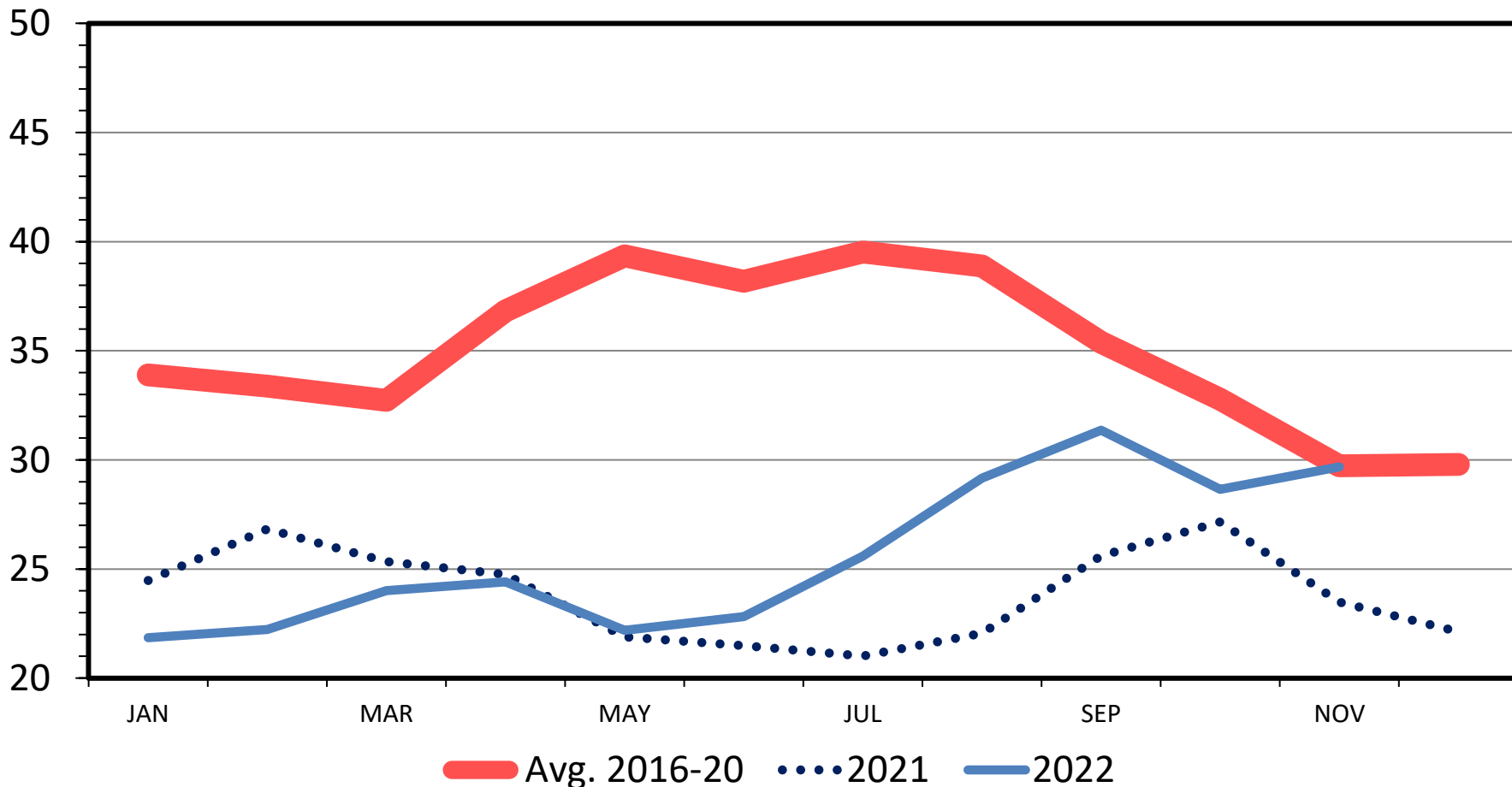


Data Source: USDA-ERS & USDA-FAS
Livestock Marketing Information Center

LAMB AND MUTTON IN COLD STORAGE

Frozen, End of the Month

Mil. Pounds



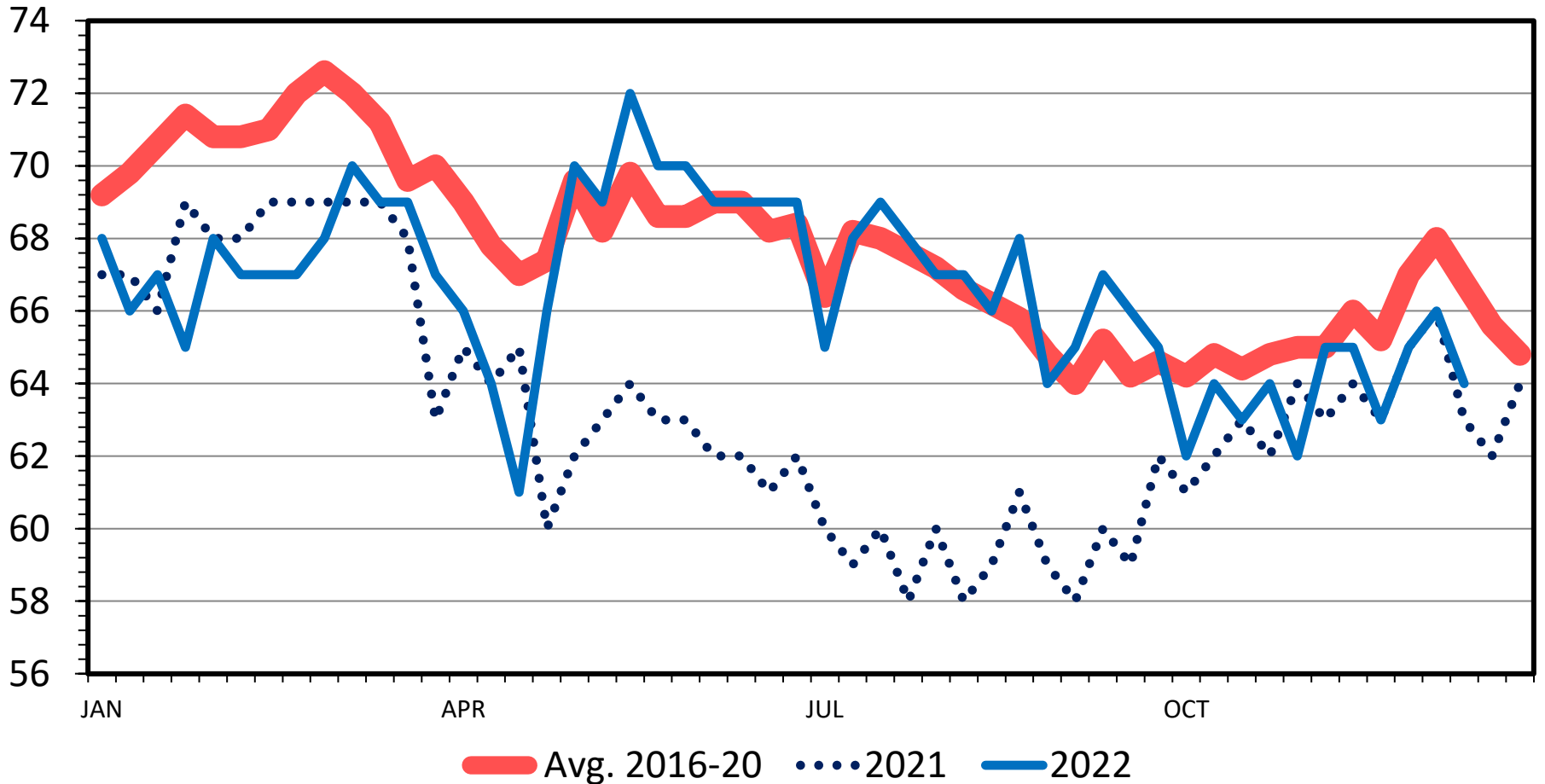
Data Source: USDA-NASS

Livestock Marketing Information Center

LAMB AND YEARLING DRESSED WEIGHT

Federally Inspected, Weekly

Pounds



Data Source: USDA-AMS & USDA-NASS

Livestock Marketing Information Center

Demand

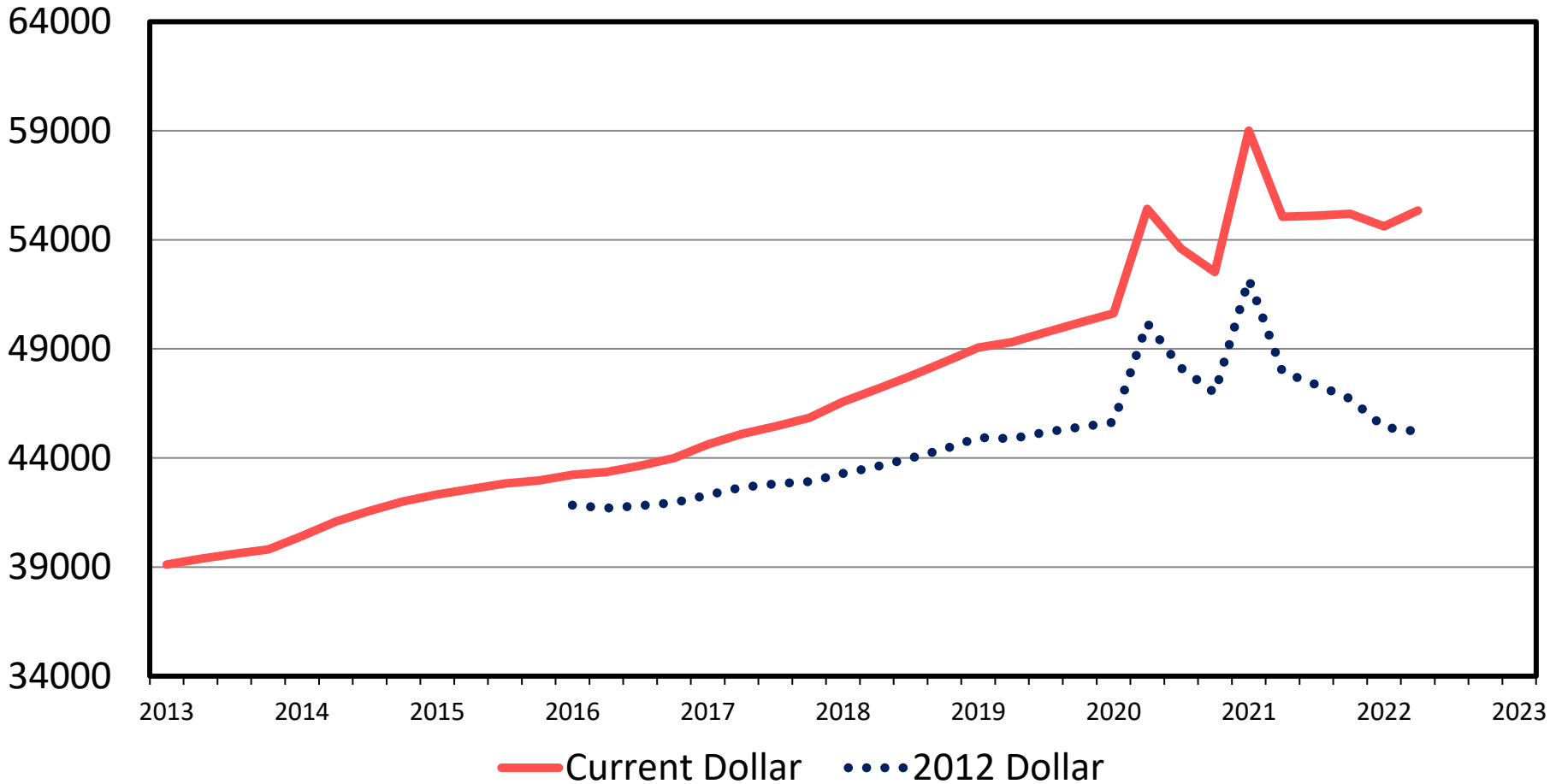
Demand Overview

- Success Story in Pandemic
 - People stayed home but, they tried new things
- Bounce Back to Normal
 - Sales struggle
- Now, Economic Struggles
 - Inflation, tight budgets, expensive lamb
 - Demand has shifted – classic shifters: income, other prices, tastes and preferences

PER CAPITA DISPOSABLE PERSONAL INCOME

Quarterly

Dollars



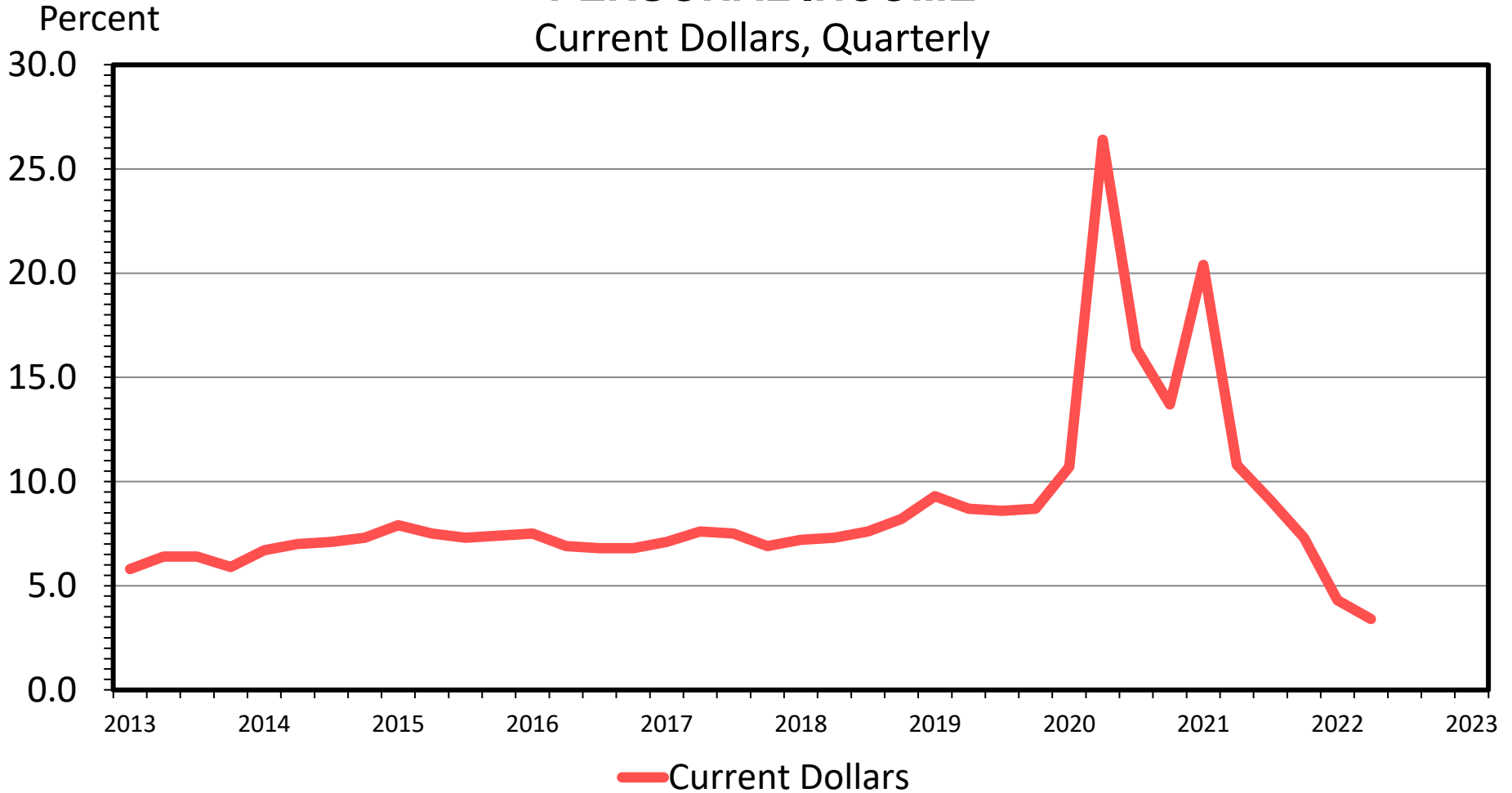
Data Source: Bureau of Economic Analysis

Livestock Marketing Information Center

2009 Dollars Calculated

PERSONAL SAVINGS AS A PERCENT OF DISPOSABLE PERSONAL INCOME

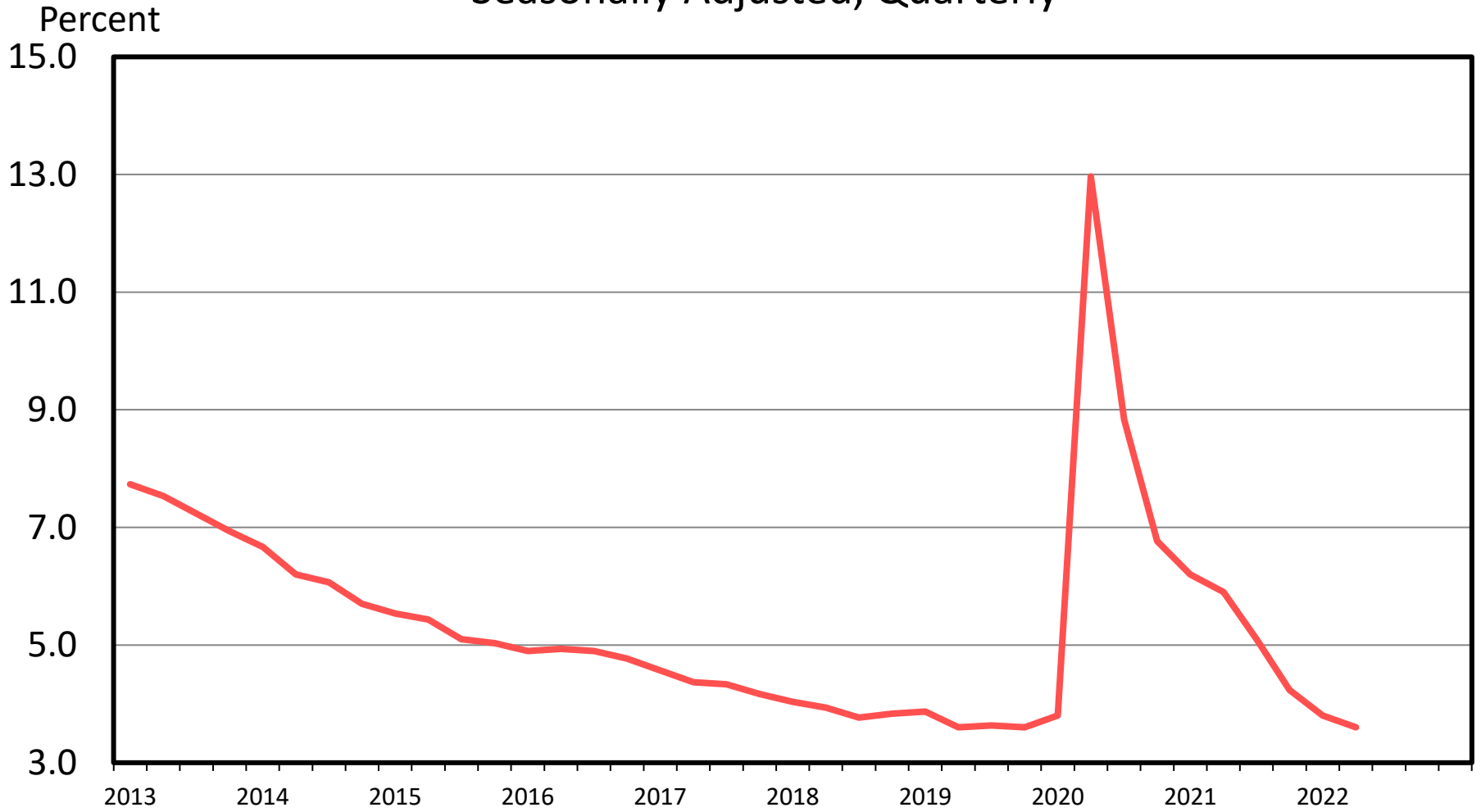
Current Dollars, Quarterly



Data Source: Bureau of Economic Analysis
Livestock Marketing Information Center

U.S. UNEMPLOYMENT RATE

Seasonally Adjusted, Quarterly



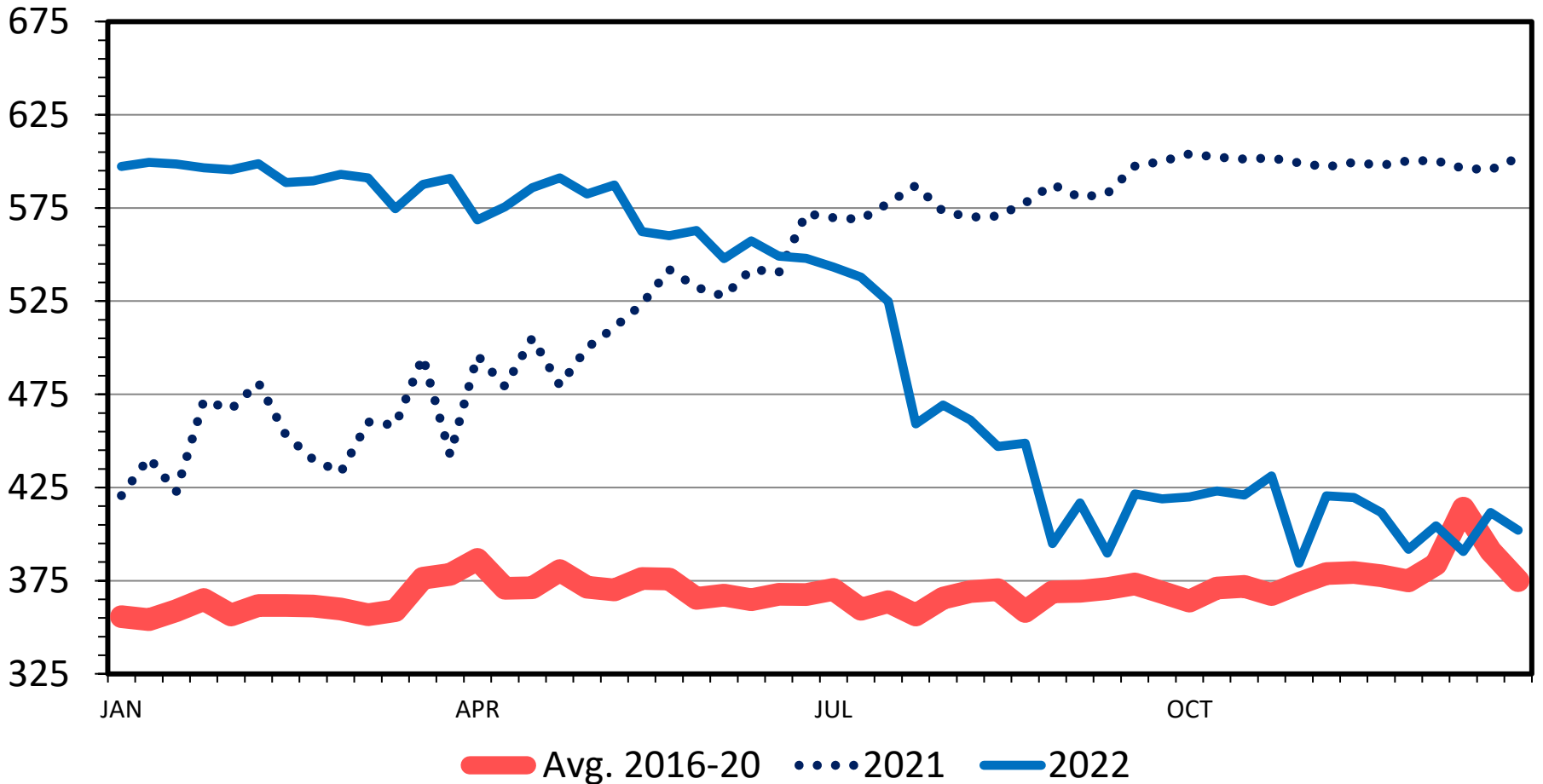
Data Source: Bureau of Labor Statistics, Compiled & Analysis
by LMIC

Livestock Marketing Information Center

BOXED LAMB SINGLE LEG PRICES

Trotter Off, 5 Day Rolling Average

\$ Per Cwt.

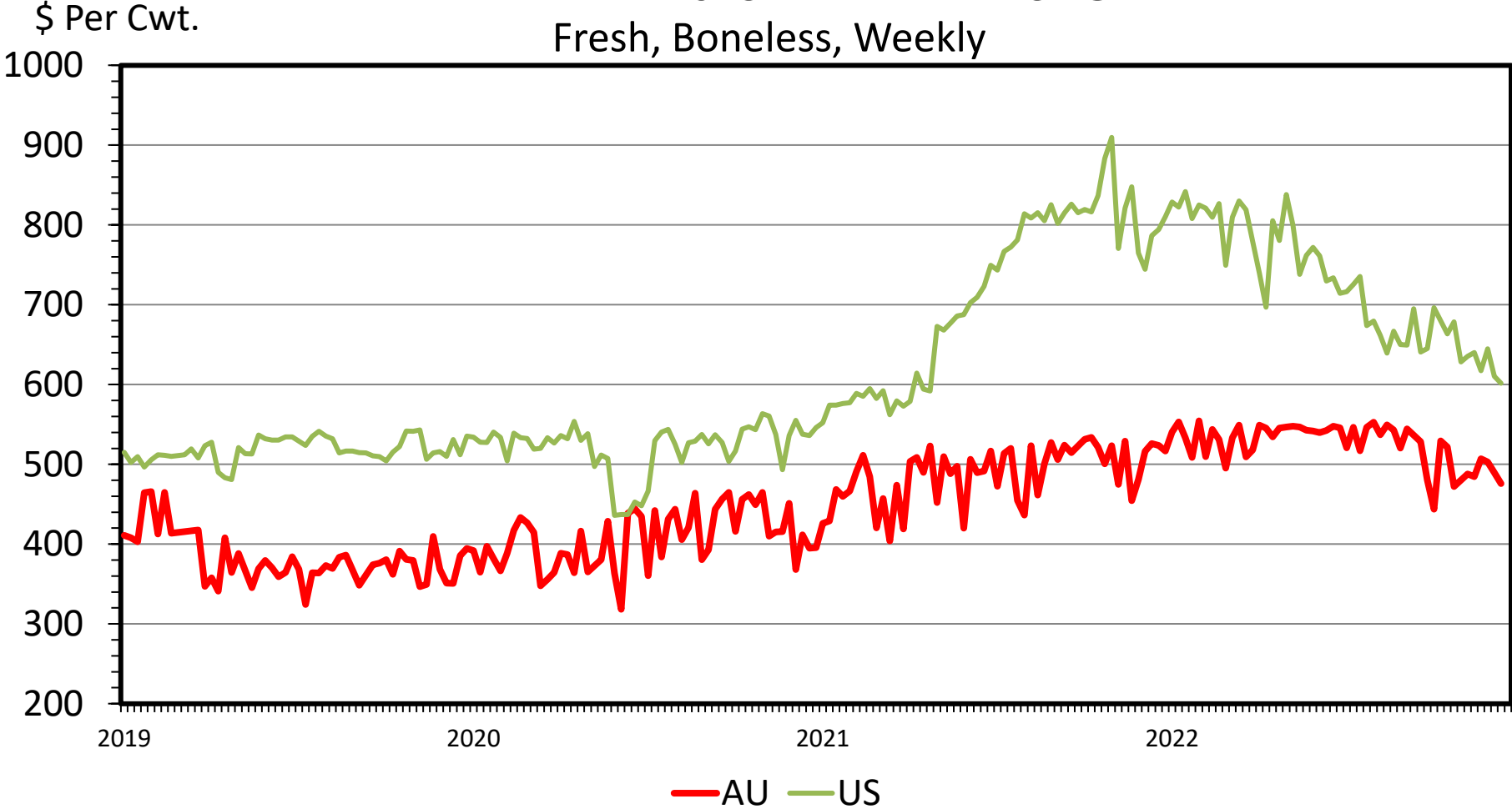


Data Source: USDA-AMS

Livestock Marketing Information Center

AUSTRALIA vs U.S. PARTIAL LEG OF LAMB PRICES

Fresh, Boneless, Weekly

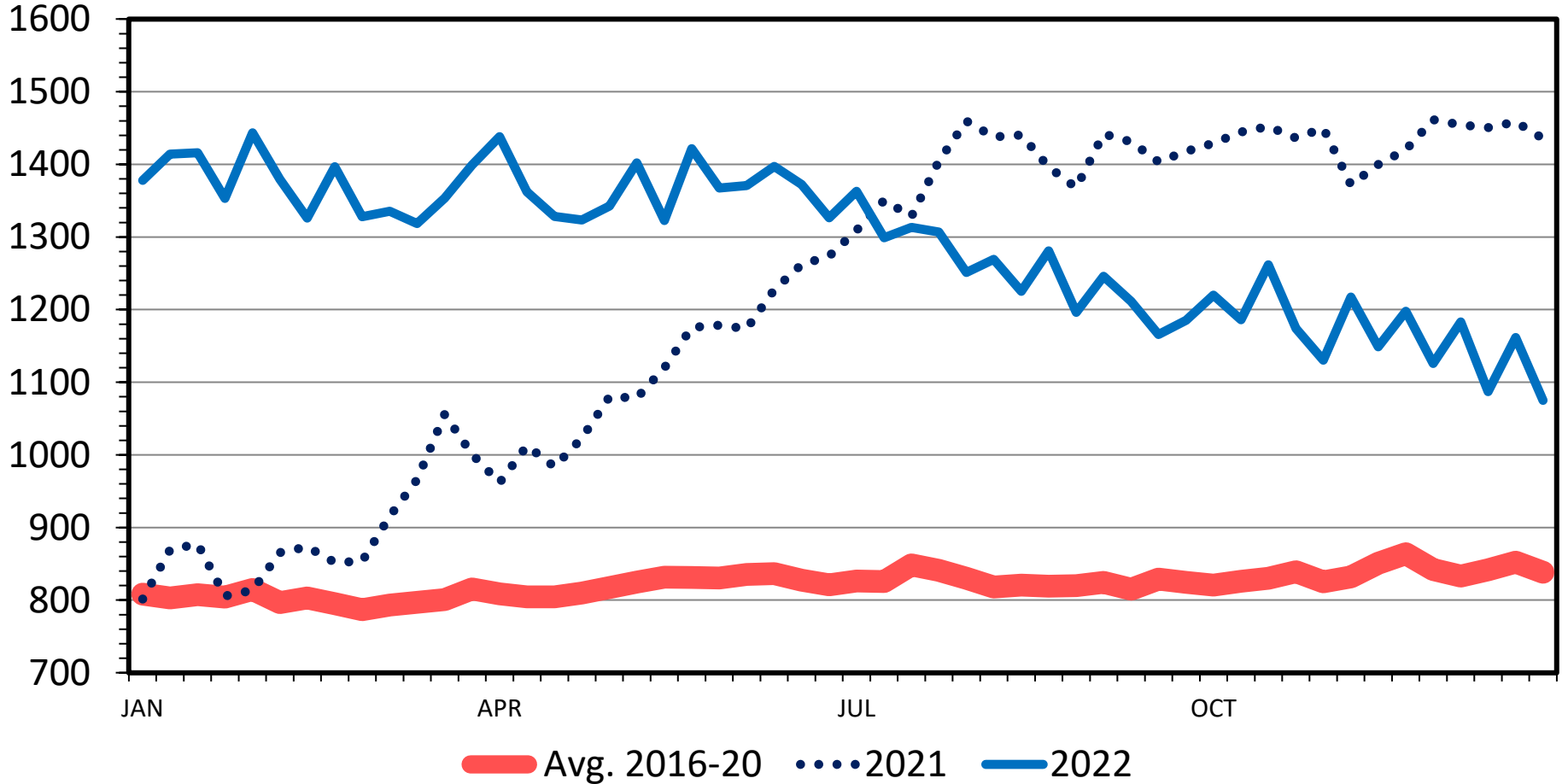


Data Source: USDA-AMS, Compiled & Analysis by LMIC
Livestock Marketing Information Center

BOXED LAMB RACK PRICES

Medium, 5 Day Rolling Average

\$ Per Cwt.



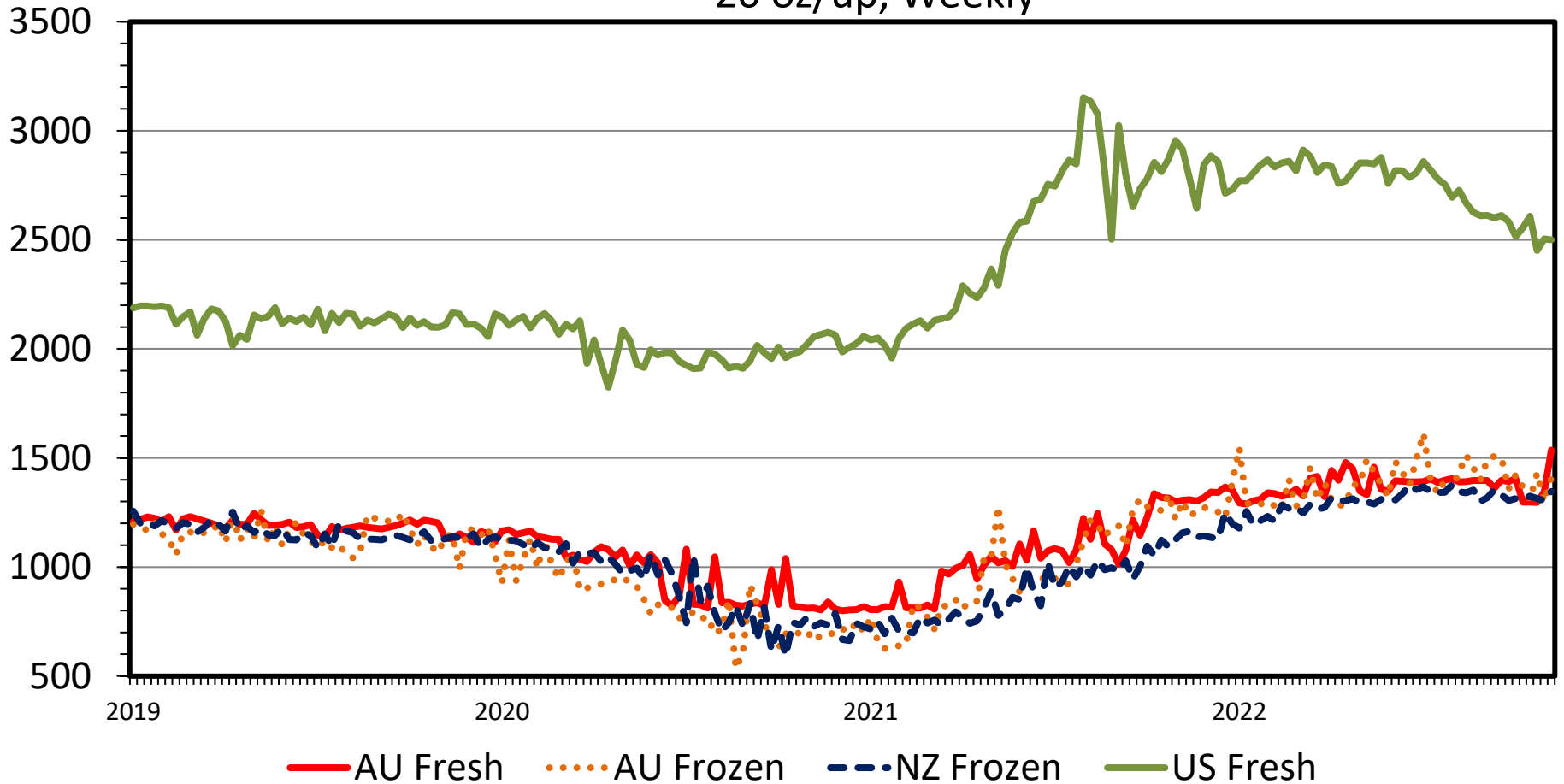
Data Source: USDA-AMS

Livestock Marketing Information Center

AUSTRALIA vs. NEW ZEALAND vs. U.S. RACK PRICES

\$ Per Cwt.

20 oz/up, Weekly

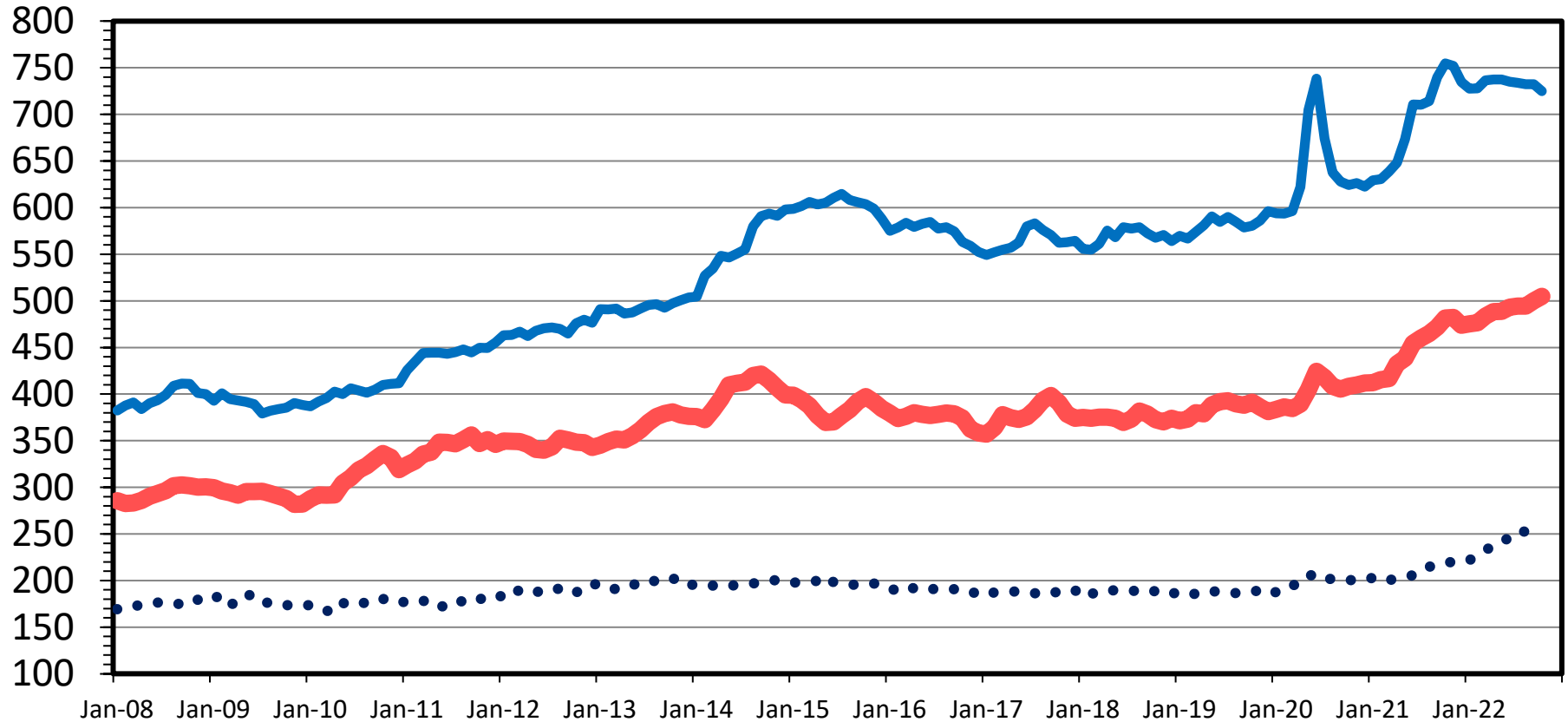


Data Source: USDA-AMS, Compiled & Analysis by LMIC
Livestock Marketing Information Center

RETAIL PRICE COMPARISON

Monthly

Cents Per Pound



 Pork

 Composite Broiler

 All Fresh Beef

Data Source: Bureau of Labor Statistics & USDA-ERS

Livestock Marketing Information Center

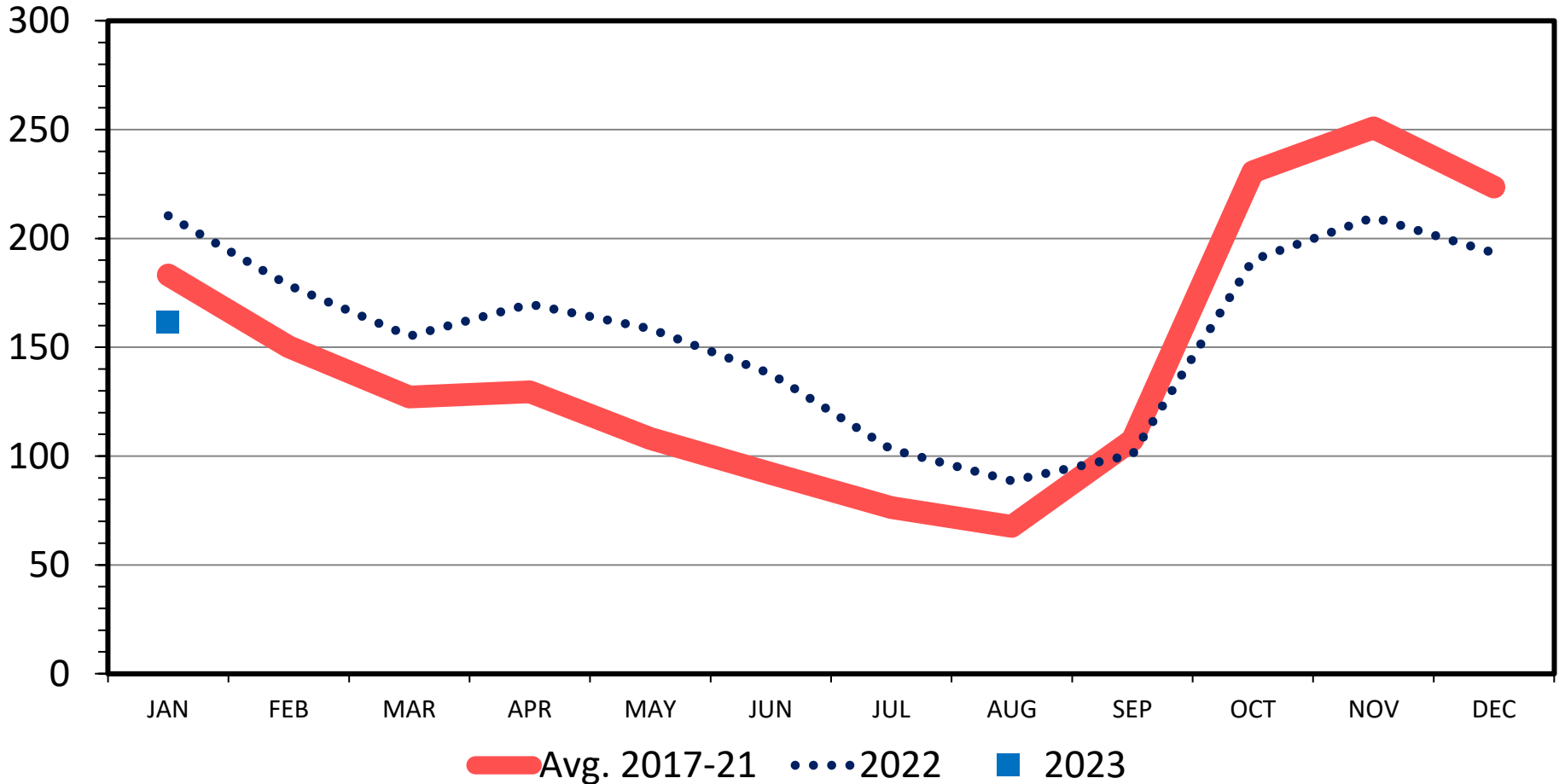
Key Supply Side

- Production Below Last Year
- Large Imports
- Large Amount in Storage

COLORADO LAMBS ON FEED

Monthly

Thou. Head



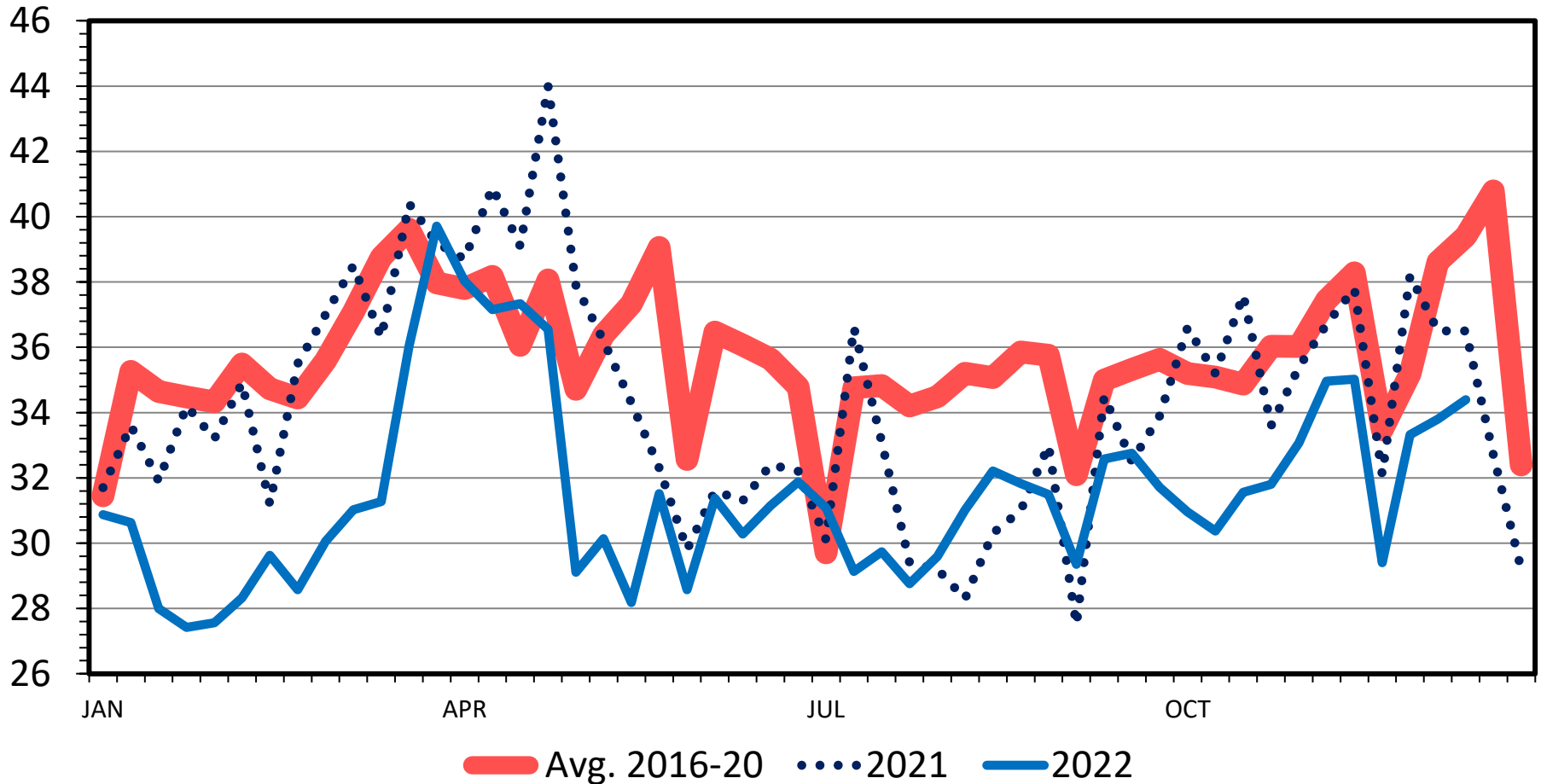
Data Source: USDA-AMS

Livestock Marketing Information Center

LAMB AND YEARLING SLAUGHTER

Federally Inspected, Weekly

Thou. Head



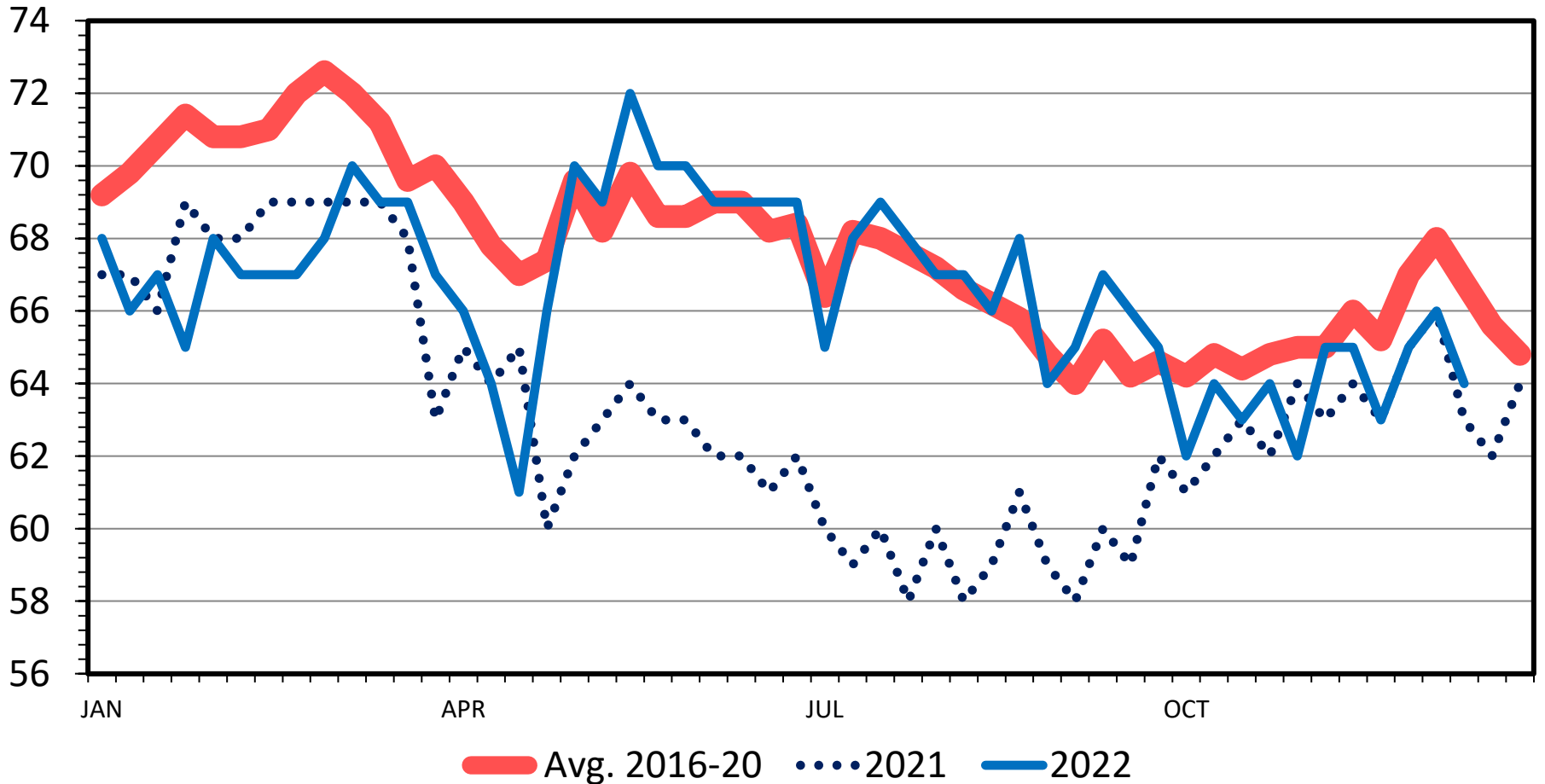
Data Source: USDA-AMS & USDA-NASS

Livestock Marketing Information Center

LAMB AND YEARLING DRESSED WEIGHT

Federally Inspected, Weekly

Pounds



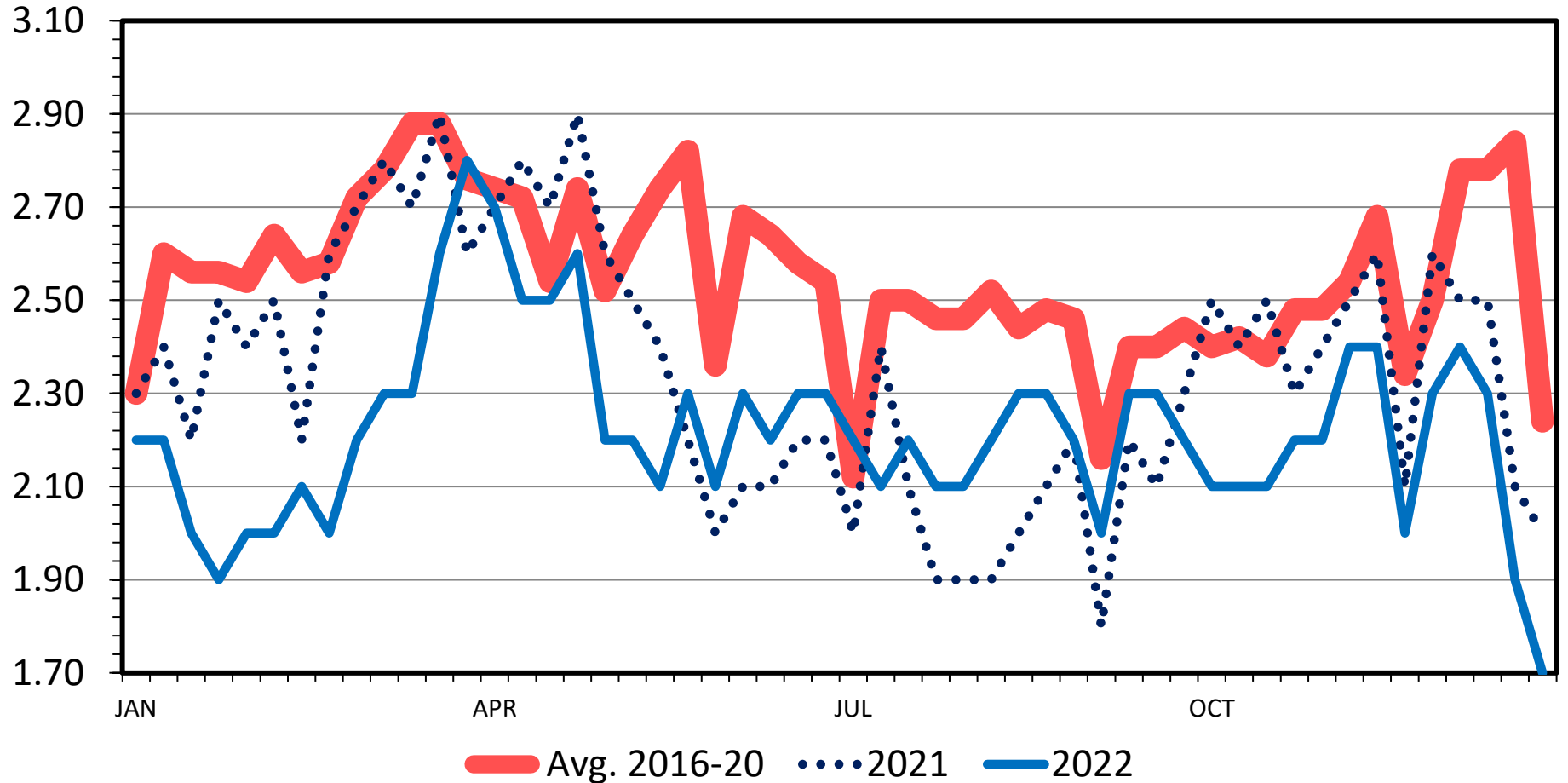
Data Source: USDA-AMS & USDA-NASS

Livestock Marketing Information Center

LAMB AND MUTTON PRODUCTION

Federally Inspected, Weekly

Mil. Pounds



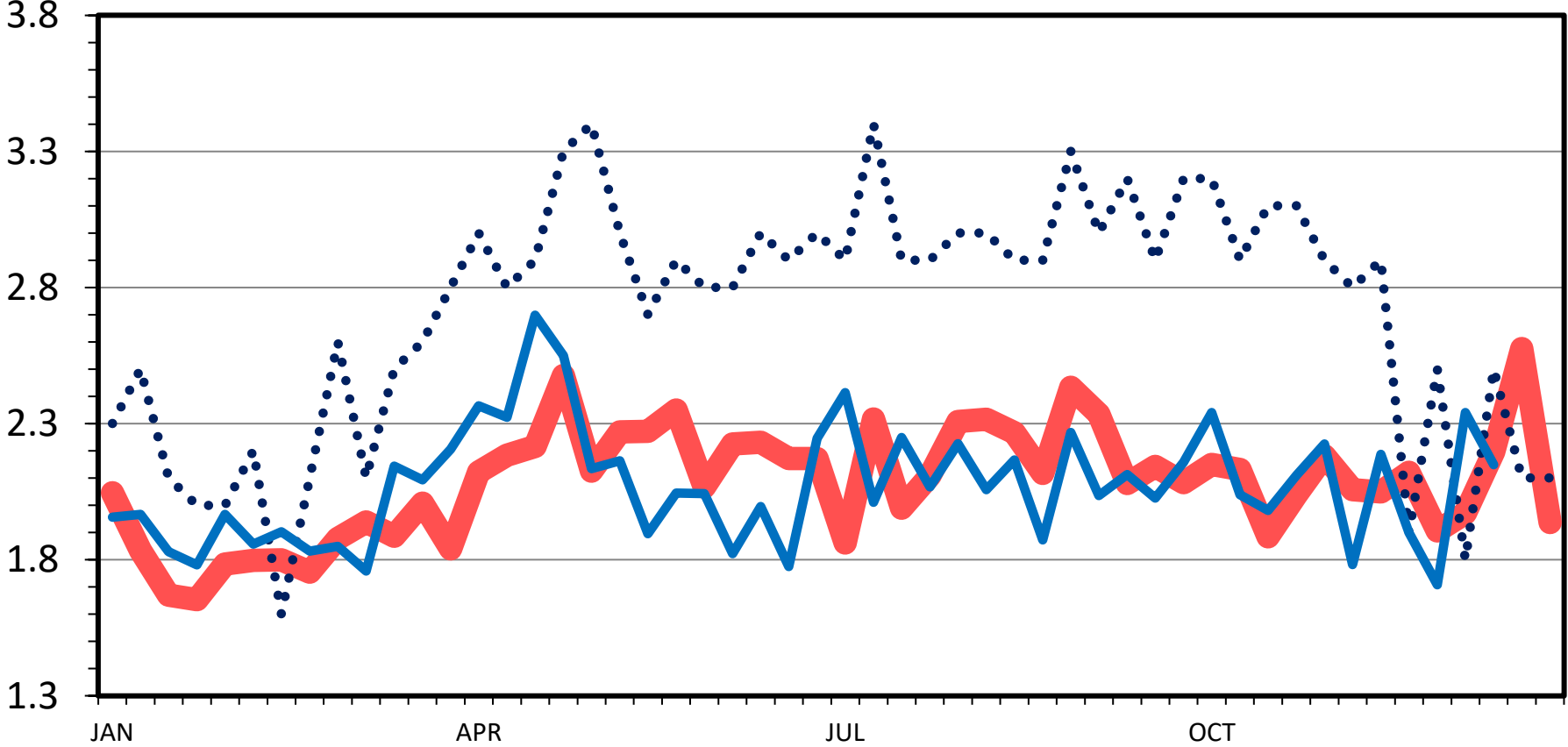
Data Source: USDA-AMS & USDA-NASS

Livestock Marketing Information Center

MATURE SHEEP SLAUGHTER

Federally Inspected, Weekly

Thou. Head



— Avg. 2016-20 ··· 2021 — 2022

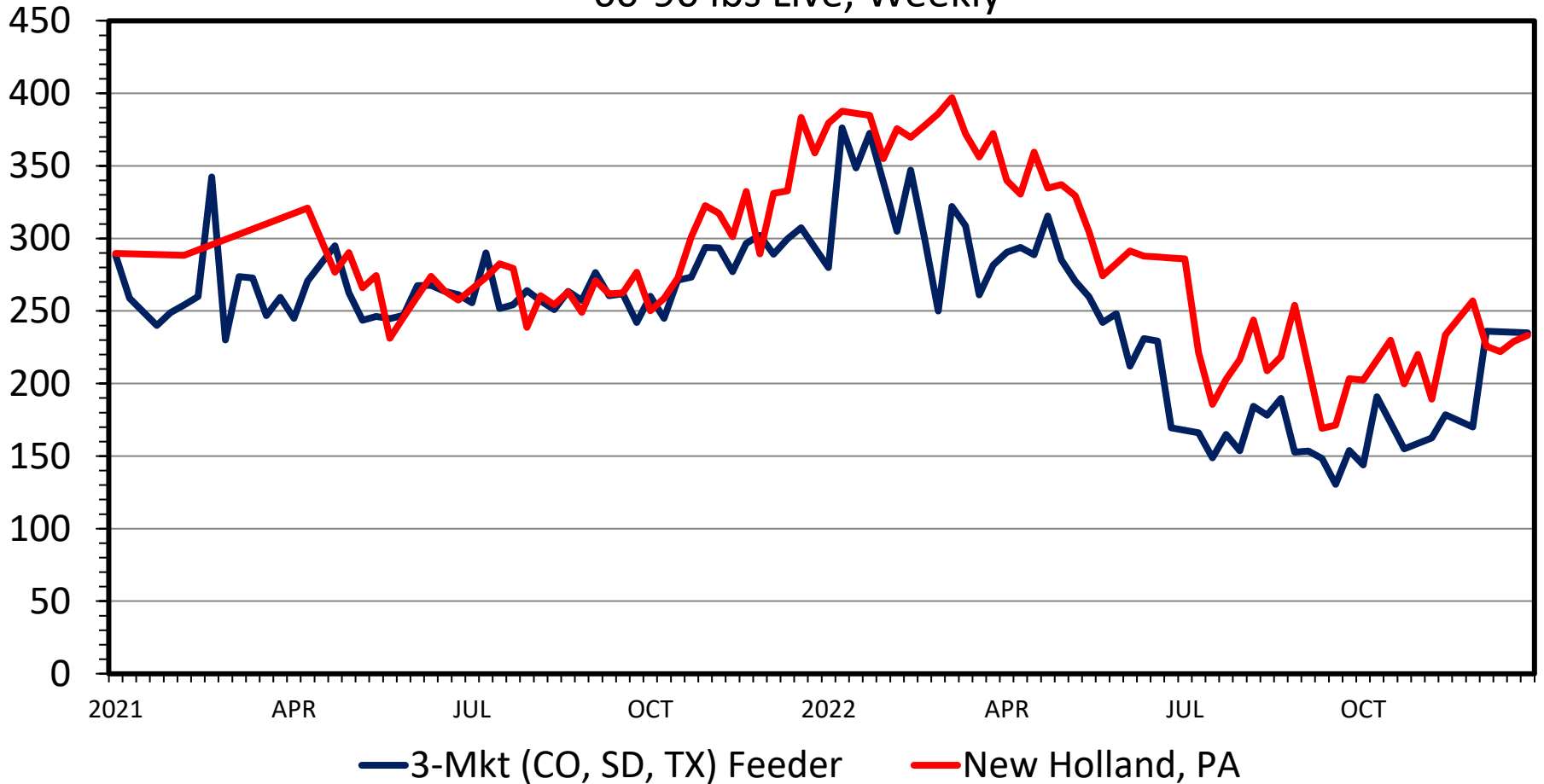
Data Source: USDA-AMS & USDA-NASS

Livestock Marketing Information Center

TRADITIONAL vs NON-TRADITIONAL LAMB PRICES

60-90 lbs Live, Weekly

\$ Per Cwt.



Data Source: USDA-AMS, Compiled & Analysis by LMIC
Livestock Marketing Information Center

Where to From Here?

- A Little Less Production in 2023
- Recovery in Prices
 - A lot hinges on demand, but tighter supplies will help
- Imports Likely to Be Large
- Work Off Stocks



Contact

danderson@tamu.edu

<http://livestock-marketing.tamu.edu>

@LivestockEcon

(979) 845-4351

THANK YOU!
